

# 3295 ELDER STREET (AIRPORT PLAZA)

BOISE, IDAHO

## PRIME OFFICE SPACE NEAR AIRPORT

### FOR LEASE



#### PROPERTY INFORMATION

- Address:  
3295 Elder Street  
Boise, Idaho 83702
- Bldg Size: 48,100 SF
- Building Class: A
- Zoning: L-OD
- Stories: 4

#### LEASE TERMS

- Available: Immediately
- Term: 3-5 Year
- Type: Full Service
- Rate: ~~\$18.00~~ \$14.00

#### SUITE INFORMATION

- Suite 150  
Size: 5,092 SF
- Suite 154  
Size: 1,000 SF
- Suite 156  
Size: 1,630 SF

#### COMMENTS

- Easy freeway access.
- Excellent office location near airport.
- Prime location for professional offices.



# NAI Pinnacle

Commercial Real Estate Services, Worldwide.

**Contact:**

**Craig Wagstaff, CCIM**

(208) 830-3587 Cell

(208) 947-0019 Office

[wag@naiboise.com](mailto:wag@naiboise.com)

Industrial | Investment | Land | Office | Retail  
Sales & Leasing | Valuation | Consulting | Site Selection | Property Management

NAI Pinnacle • (208) 947-0019 • 1409 W. Main Street, Suite 110 • Boise, Idaho 83702

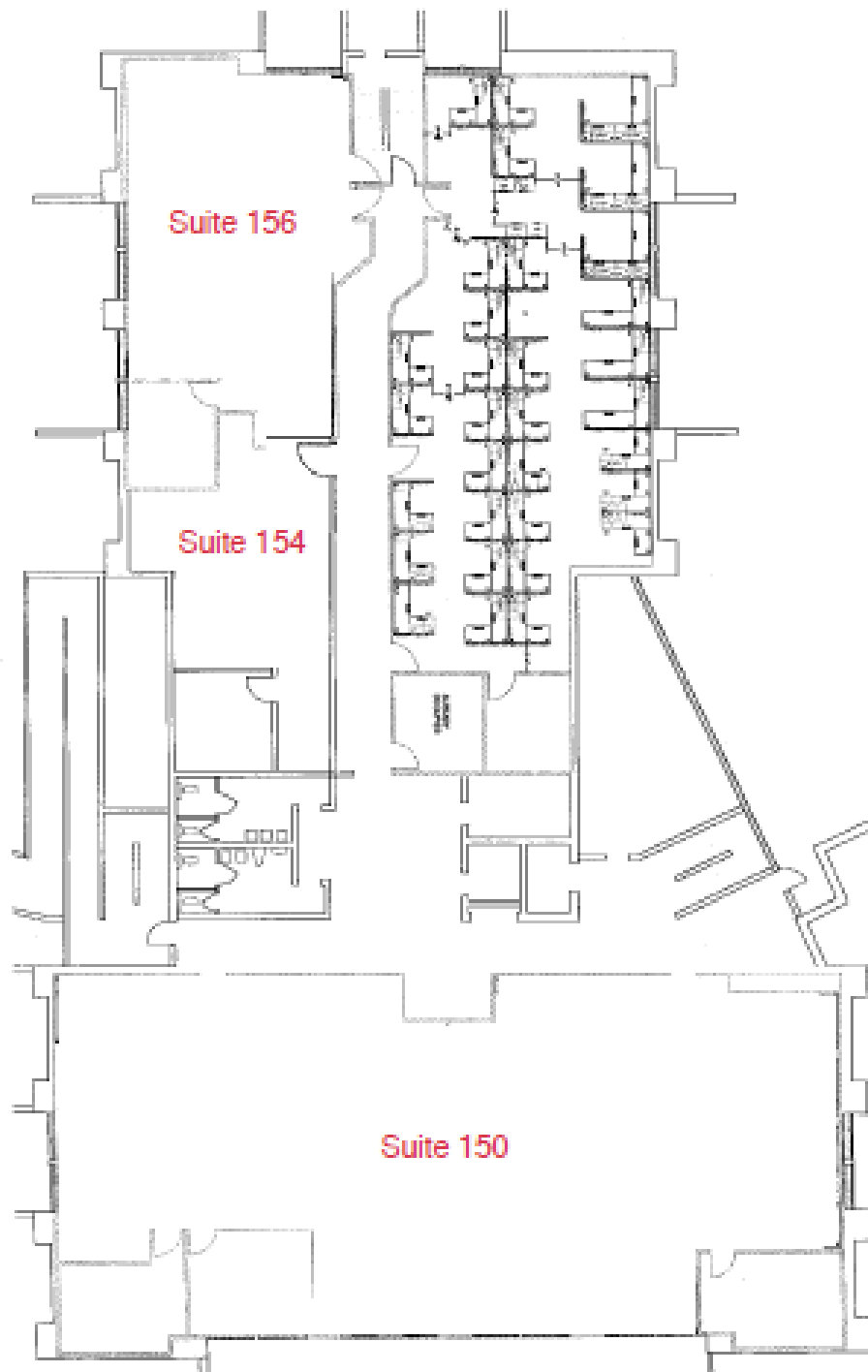
The Information was obtained from sources believed reliable but is not guaranteed. Any opinions or estimates are used for example only. All information should be verified prior to purchase or lease.

3295 ELDER STREET (AIRPORT PLAZA)

BOISE, IDAHO

PRIME OFFICE SPACE NEAR AIRPORT

FOR  
LEASE



Industrial | Investment | Land | **Office** | Retail

The information contained herein is from sources deemed reliable. All information should be verified prior to purchase or lease.